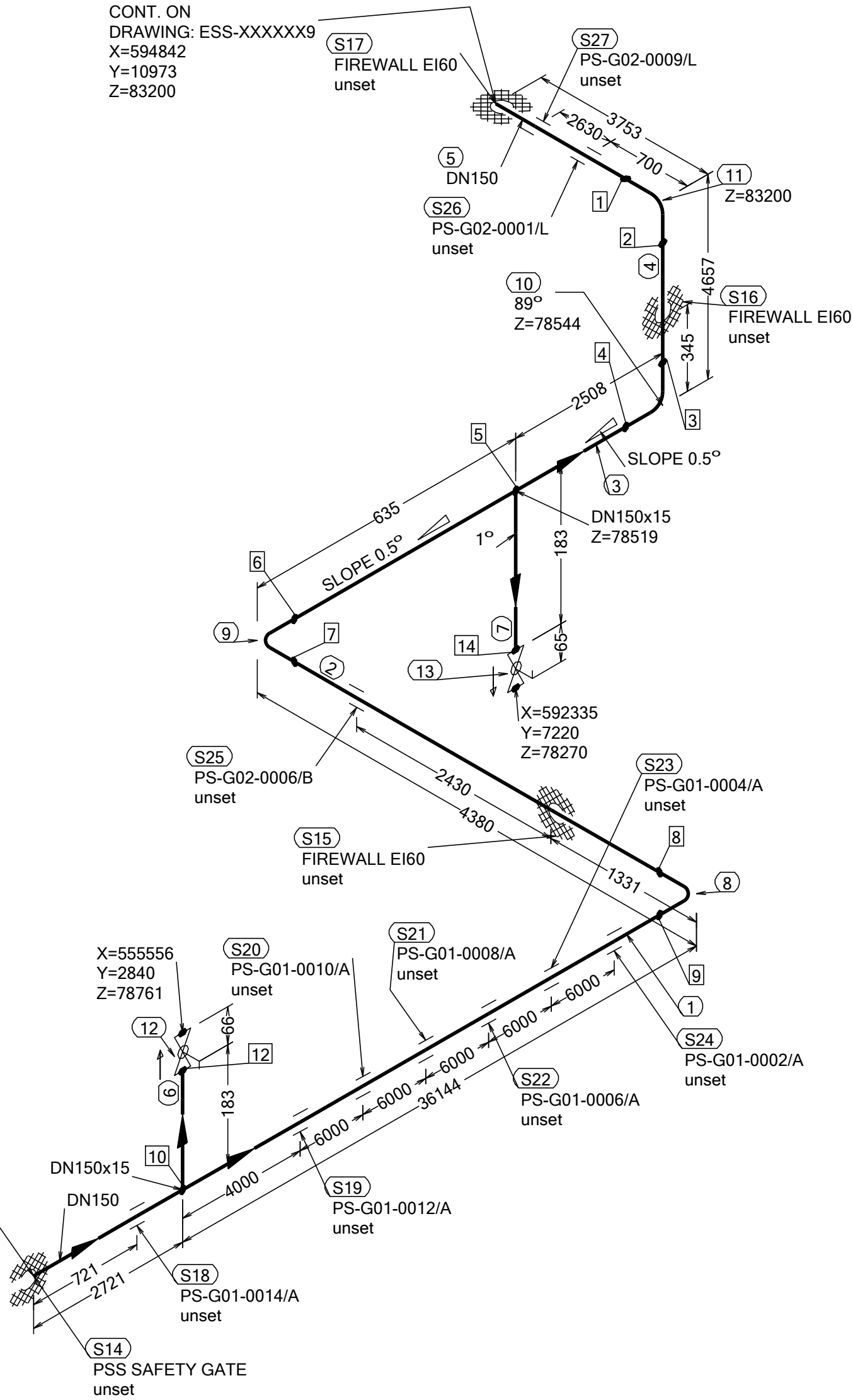


N (Y)

CONT. ON  
DRAWING: ESS-XXXXX9  
X=594842  
Y=10973  
Z=83200

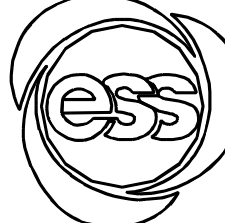


WELD	WPS
1	
2	
3	
4	
5	
6	
7	
8	
9	
10	
11	
12	
13	
14	

FABRICATION MATERIALS					
PT NO	COMPONENT DESCRIPTION	DN	MATERIAL	QTY (mm)	REMARKS
	<u>PIPE</u>				
1	PIPE, SS-EN 10217-7, TC1, 168.3x2.0	150	EN 1.4404	38636	SETON TEE
2	PIPE, SS-EN 10217-7, TC1, 168.3x2.0	150	EN 1.4404	3922	
3	PIPE, SS-EN 10217-7, TC1, 168.3x2.0	150	EN 1.4404	2687	SETON TEE
4	PIPE, SS-EN 10217-7, TC1, 168.3x2.0	150	EN 1.4404	4201	
5	PIPE, SS-EN 10217-7, TC1, 168.3x2.0	150	EN 1.4404	3524	
6	PIPE, SS-EN 10217-7, TC1, 21.3x2.0	15	EN 1.4404	100	
7	PIPE, SS-EN 10217-7, TC1, 21.3x2.0	15	EN 1.4404	100	
	<u>FITTINGS</u>				
8	ELBOW 90, TYPE 3D, SS-EN 10253-4, TYPE A, 168.3x2.0	150	EN 1.4404	1	
9	ELBOW 90, TYPE 3D, SS-EN 10253-4, TYPE A, 168.3x2.0	150	EN 1.4404	1	
10	ELBOW 90, TYPE 3D, SS-EN 10253-4, TYPE A, 168.3x2.0	150	EN 1.4404	1	
11	ELBOW 90, TYPE 3D, SS-EN 10253-4, TYPE A, 168.3x2.0	150	EN 1.4404	1	
	<u>VALVES / IN-LINE ITEMS</u>				
12	BALL VALVE, WORCESTER A44, SHORT, BW	15		1	
13	BALL VALVE, WORCESTER A44, SHORT, BW	15		1	

ERECTION MATERIALS					
PT NO	COMPONENT DESCRIPTION	DN	MATERIAL	QTY (mm)	REMARKS
SUPPORTS					
14	PENETRATION ATTA	150		1	
15	PENETRATION ATTA	150		1	
16	PENETRATION ATTA	150		1	
17	PENETRATION ATTA	150		1	
18	ESS Atta	150		1	
19	ESS Atta	150		1	
20	ESS Atta	150		1	
21	ESS Atta	150		1	
22	ESS Atta	150		1	
23	ESS Atta	150		1	
24	ESS Atta	150		1	
25	ESS Atta	150		1	
26	ESS Atta	150		1	
27	ESS Atta	150		1	

CONT. ON  
DRAWING: ESS-XXXXX53  
X=552835  
Y=2840  
Z=78512

WPS See Weldlist TBN	Design Temperature 50degC	Tightening Torque For Flange Joints TBN	P&ID Drawing Number ESS-0059673	General Layout Drawing Number TBN	Calculation Report ESS-0058702	Inspection Plan TBN	Area Code G01-NCL
Quality Level For Weldign Acc To TBN	Designing Pressure 10bar (g)	Bend Radius N/A	Bending Procedure N/A	Coupling Installation Procedure TBN	Pressure Test Program TBN	Alternate System Tag	Date (First Issue) 170522
Weld Joint Efficiency Factor (Longitudinal) 1,0	Test Pressure 14.3bar (g)	Insulation Specification N/A			Title/Name EUROPEAN SPALLATION SOURCE ERIC WATER COOLING SYSTEM CWM-CWS02 OVERVIEW ESS.ACC.E02.E02.WP0003		Scale -
Elevation (z) Acc To BCS	Quality Class MQC4-C	Insulation Thickness N/A					Format A2
	Media CWM	Allowance For Corrosion 0					Sheet 1 of 1
	Pipe Specification MQC4-W-PN16	Surface Treatment N/A			Document Number ESS-XXXXX35	Revision A1	

Rev	Description	Date	Drawn	Designed	Reviewed	Verified	Quality	Approved
A1	ISSUED FOR CDR	170522	FRPE	FRPE	AKCO	ANLU		